



# Blue Power

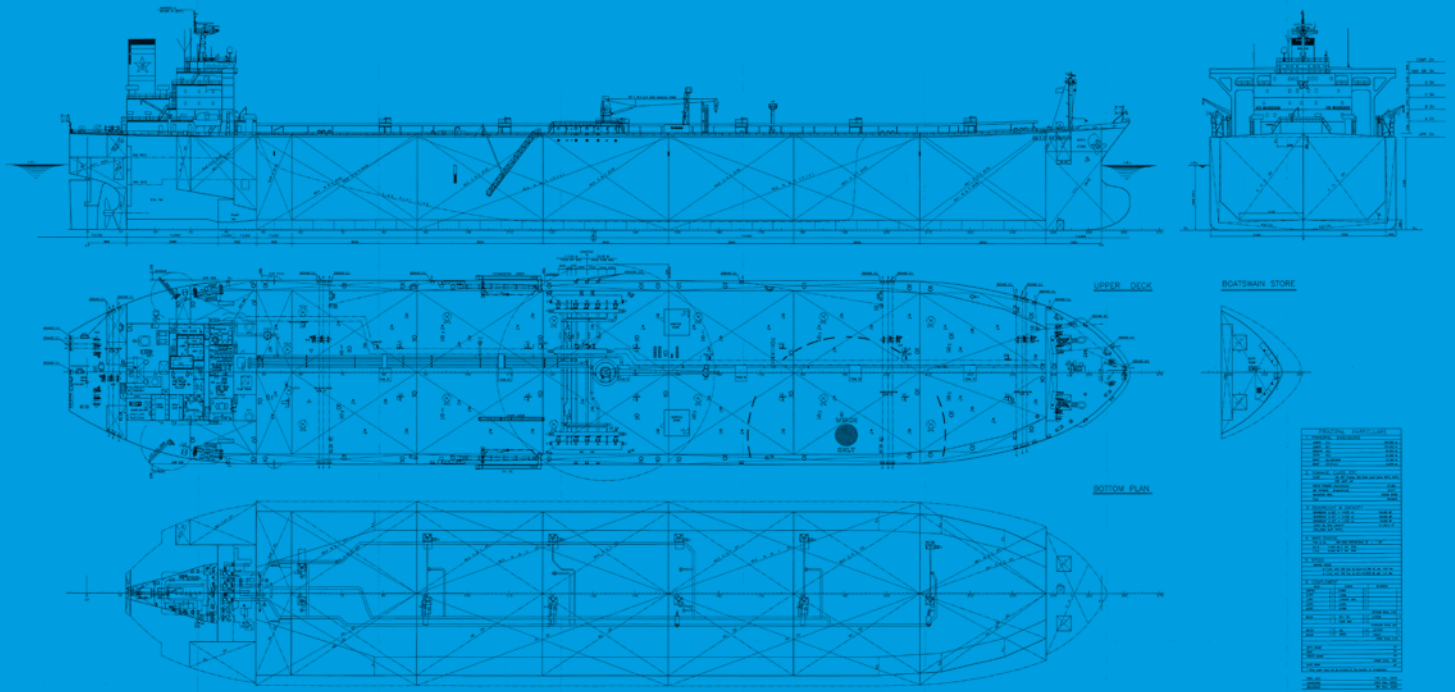
## Main particulars

Flag	LIBERIA
Call Sign	D5KT8
Year Built	2003
Shipyard	TSUNEISHI SHIPBUILDING CO LTD.
Hull Number	1253
Classification	LLOYDS REGISTER
Class Notation	I00A1 DOUBLE HULL OIL TANKER,IWS,ESP,LI LMC, IGS,UMS,COW,ETA,SBT,SHIPRIGHT(SERS,MPMS,SCM)
IMO Number	9268112
Gross Tonnage	57664
Net Tonnage	32077

Length overall	240,50
Length between perpendiculars	230,00
Breadth moulded	42,00
Depth	21,20
Draft summer (sw)	14,88
Deadweight at summer draft (sw)	106360

Service speed (in ballast)	15,00
Service speed (laden)	14,10

Fuel Oil consumption (main eng)	45,4 MT/DAY @ FULL POWER/SPEED
Cruising range (nm)	22500 nm



## General Arrangement M/T Blue Power

### Main Machinery

Main engine:	MITSUI MAN B&W 6S60MC MCO 11840 kW @ 104 RPM CSO 10660 kW @ 100 RPM
Auxiliary engines:	YANMAR 6N2IAL-DV 3 x 640 kW
Emergency generator:	MITSUI ZOSEN BF6L913C 137KW
Oil fired boiler:	MITSUBISHI MAC-25B 2 x 25000 KG/HR

### Cargo Pumps

Cargo pumps:	STEAM TURBINE DRIVEN SHINKO KV400 3 x 2500 M3/HR
Stripping pumps:	STEAM DRIVEN SHINKO KPH200 1 x 200 M3/HR
Stripping eductor:	1 x 300 M3/HR
Ballast pumps:	ELECTRIC DRIVEN SHINKO CV350 2 x 1500 M3/HR
Ballast eductor:	1 x 300 M3/HR

### Deck Machinery

(type and brake holding capacity)	
Windlass-mooring winch:	HYDRAULIC WINCH KAWASAKI 2 x 359 kN @ 9 M/MIN
Mooring winch forward:	HYDRAULIC WINCH KAWASAKI 2 x 147 kN @ 15 M/MIN
Mooring winch mid deck:	HYDRAULIC WINCH KAWASAKI 1 x 147 kN @ 15 M/MIN
Mooring winch aft:	HYDRAULIC WINCH KAWASAKI 3 x 147 kN @ 15 M/MIN

### Cargo Oil Tanks

#### (12 TANKS, 2 SLOP TANKS)

Compartment	100% cub.metres	98% cub.metres
No.1 COT (port and stbd)	16612,00	16279,80
No.2 COT (port and stbd)	20087,40	19685,70
No.3 COT (port and stbd)	20188,00	19784,20
No.4 COT (port and stbd)	20188,20	19784,40
No.5 COT (port and stbd)	20188,80	19785,02
No.6 COT (port and stbd)	19483,90	19094,22
Slop tank (port and stbd)	4743,90	4649,02
<b>TOTAL</b>	<b>121492,20</b>	<b>119062,36</b>

#### Other Tanks

Compartment	100% cub.metres	98% cub.metres
Fuel tanks	3435,70	3366,99
Diesel Oil tanks	303,80	297,72
Lubricating oil tanks	24,40	23,91
Fresh water tanks	358,40	351,23
Drinking water tanks	125,40	122,89
Ballast water tanks total	39420,30	38631,89
Various other tanks	126,90	124,36