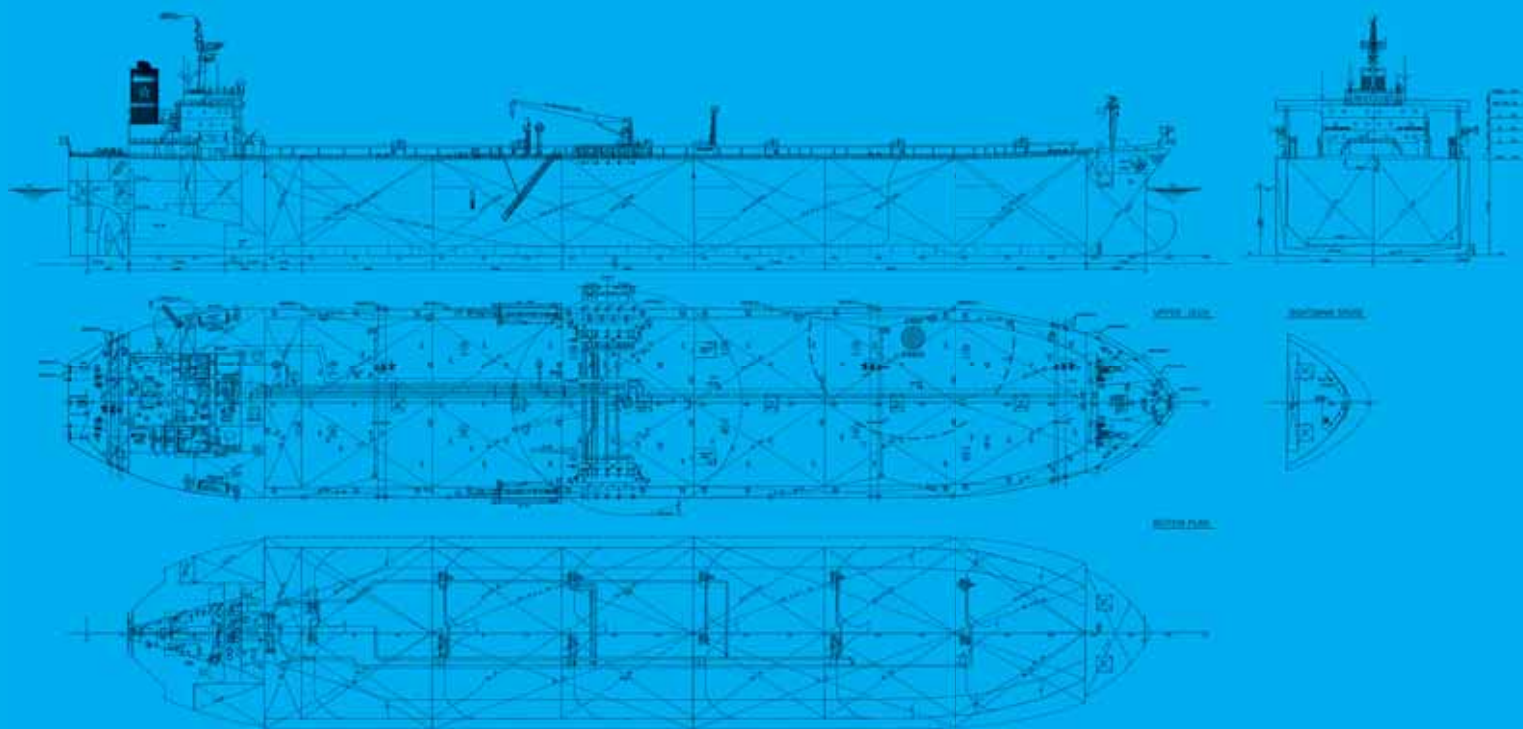




Blue River

Main particulars

Flag	LIBERIA
Call Sign	D5GZ5
Year Built	2002
Shipyard	TSUNEISHI SHIPBUILDING CO LTD.
Hull Number	1233
Classification	DNV-GL
Class Notation	IAI, Tanker for oil, ESP, ED, LCS, VCS2, NAUTICUS
IMO Number	9247821
Gross Tonnage	57529
Net Tonnage	32149
Length overall	240,50
Length between perpendiculars	230,00
Breadth moulded	42,00
Depth	21,20
Draft summer (sw)	14,85
Deadweight at summer draft (sw)	106638
Service speed (in ballast)	14,80
Service speed (laden)	14,00
Fuel Oil consumption (main eng)	47 MT/DAY @ FULL POWER/SPEED
Cruising range (nm)	21900



General Arrangement M/T Blue River

Main Machinery

Main engine:	MITSUI MAN B&W 6S60MC MCR 12240 kW @ 105 RPM NCR 11020 kW @ 101 RPM
Auxiliary engines:	DAIHATSU 5DK-20 3 x 600 kW
Emergency generator:	MAN D 2866 TE 154 kW
Oil fired boiler:	MITSUBISHI MAC-55B 1 x 55000 KG/HR
Cargo Pumps	
Cargo pumps:	STEAM TURBINE DRIVEN SHINKO KV400 3 x 2500 M3/HR
Stripping pumps:	STEAM DRIVEN SHINKO KPH200 1 x 200 M3/HR
Stripping eductor:	1 x 450 M3/HR
Ballast pumps:	ELECTRIC DRIVEN SHINKO CV450 1 x 3000 M3/HR
Ballast eductor:	1 x 300 M3/HR
Deck Machinery	
(type and brake holding capacity)	
Windlass-mooring winch:	HYDRAULIC WINCH KAWASAKI 2 x 359 kN @ 9 M/MIN
Mooring winch forward:	HYDRAULIC WINCH KAWASAKI 2 x 147 kN @ 15 M/MIN
Mooring winch mid deck:	HYDRAULIC WINCH KAWASAKI 1 x 147 kN @ 15 M/MIN
Mooring winch aft:	HYDRAULIC WINCH KAWASAKI 3 x 147 kN @ 15 M/MIN

Cargo Oil Tanks

(12 TANKS, 2 SLOP TANKS)

Compartment	100% cub.metres	98% cub.metres
No.1 COT (port and stbd)	8302,20	8136,20
No.2 COT (port and stbd)	10041,10	9840,30
No.3 COT (port and stbd)	10090,00	9888,20
No.4 COT (port and stbd)	10090,00	9888,20
No.5 COT (port and stbd)	10090,00	9888,20
No.6 COT (port and stbd)	9737,60	9542,85
Slop tank (port and stbd)	2371,40	2323,97
TOTAL	121493,90	119064,02

Other Tanks

Compartment	100% cub.metres	98% cub.metres
Fuel tanks	3416,70	3348,37
Diesel Oil tanks	278,70	273,13
Lubricating oil tanks	24,24	23,76
Fresh water tanks	358,40	351,23
Drinking water tanks	125,40	122,89
Ballast water tanks total	39420,30	38631,89
Various other tanks	126,90	124,36