



Blue Sky

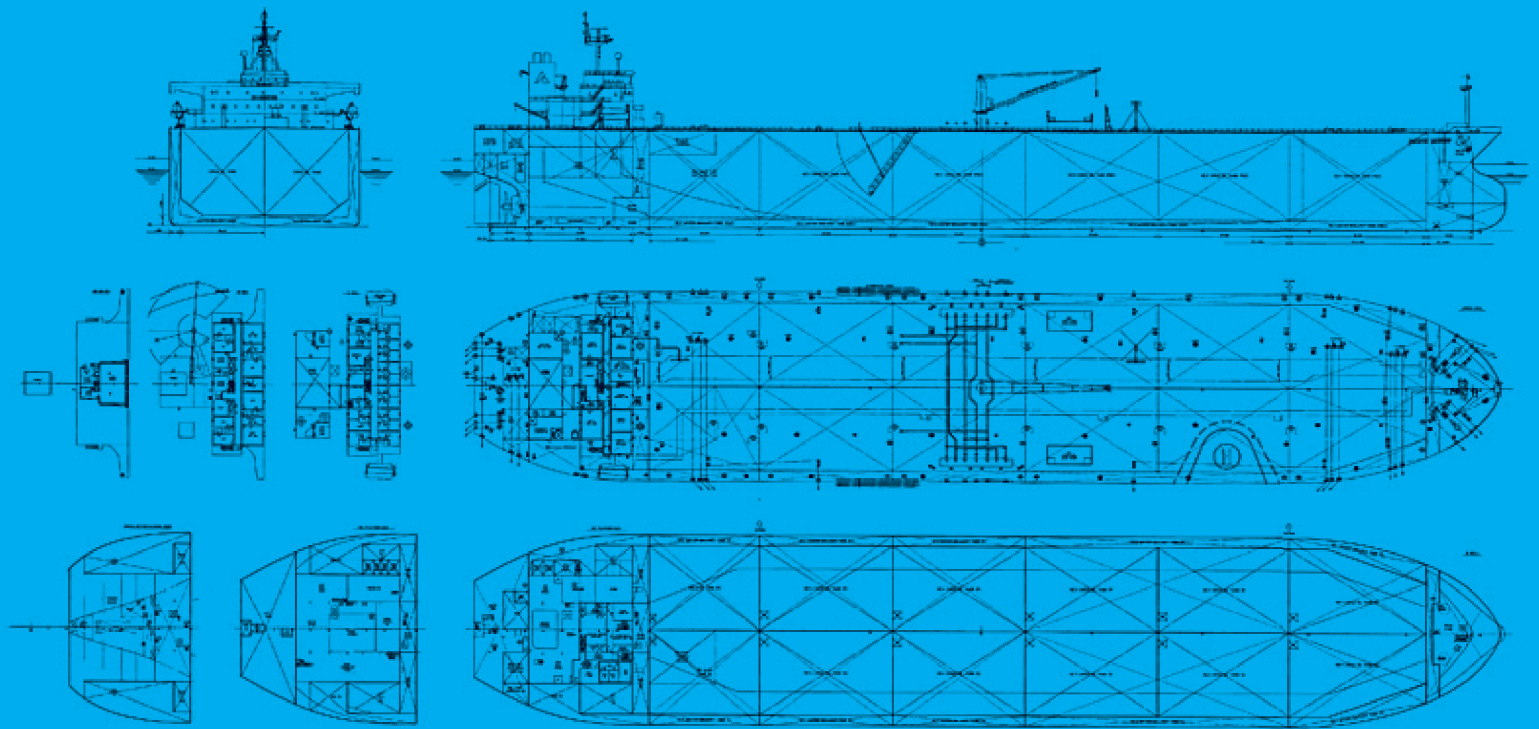
Main particulars

Flag	LIBERIA
Call Sign	A8TK7
Year Built	2009
Shipyard	SUMITOMO HEAVY INDUSTRIES, JAPAN
Hull Number	1347
Classification	AMERICAN BUREAU OF SHIPPING
Class Notation	A1, circle (E) OIL CARRIER, SH, SHIM, AMS, ACCU, VEC, ESP, UWILD
IMO Number	9413016
Gross Tonnage	55863
Net Tonnage	29818

Length overall	228,60 M
Length between perpendiculars	217,80 M
Breadth moulded	42,00 M
Depth	21,50 M
Draft summer (sw)	14,81 M
Deadweight at summer draft (sw)	105491 MT

Service speed (in ballast)	14,80 KNOTS
Service speed (laden)	14,00 KNOTS

Fuel Oil consumption (main eng)	45,60 MT/DAY
Cruising range	14.900 Miles



General Arrangement

Main Machinery

Main engine:	MAN B&W 6S60MC-C MCR 12350kW AT 97 RPM NCR 11120kW AT 93,7 RPM
Auxiliary engines:	DAIHATSU 6DK-20 3X1000KVA
Emergency generator:	CUMMINS 6CTA8.3D 188KW
Oil fired boiler:	AALBORG MISSION OL 2X25000 KG/HR
Cargo Pumps	
Cargo pumps:	STEAM TURBINE DRIVEN SHINKO KV400 3X2500M3/HR
Stripping pumps:	STEAM DRIVEN SHINKO KPH150 1X150M3/HR
Stripping eductor:	NIIKURA KOGYO FCD-ER-N 600 M3/HR
Ballast pumps:	ELECTRIC DRIVEN SHINKO 3X2000M3/HR
Ballast eductor:	NIIKURA KOGYO FC-ER 285 M3/HR
Deck Machinery	
(type and brake holding capacity)	
Windlass-mooring winch:	HYDRAULIC WINCH NIPPON PUSNES J-19CU 2X338kN AT 9M/MIN
Mooring winch forward:	HYDRAULIC WINCH NIPPON PUSNES NS200HW 2X147kN AT 12M/MIN
Mooring winch mid deck:	HYDRAULIC WINCH NIPPON PUSNES NS160HW 3X147kN AT 12M/MIN
Mooring winch aft:	HYDRAULIC WINCH NIPPON PUSNES NS160HW 3X147kN AT 12M/MIN

Cargo Oil Tanks

Compartment	100% cub.metres	98% cub.metres
No.1 COT (center)	18063,40	17702,10
No.2 COT (center)	20659,60	20246,40
No.3 COT (center)	20659,60	20246,40
No.4 COT (center)	20659,60	20246,40
No.5 COT (center)	20659,60	20246,40
Residue tank	940,70	921,90
Slop tank (port and strb)	15418,10	15109,70
TOTAL	117060,60	114719,30

Other Tanks

Compartment	100% cub.metres	98% cub.metres
Fuel tanks	2518,30	2417,50
Diesel Oil tanks	248,30	238,40
Lubricating oil tanks	142,10	136,30
Fresh water tanks	106,10	104,00
Drinking water tanks	199,60	195,60
Ballast water tanks	37201,70	36457,67
Various other tanks	128,40	125,80